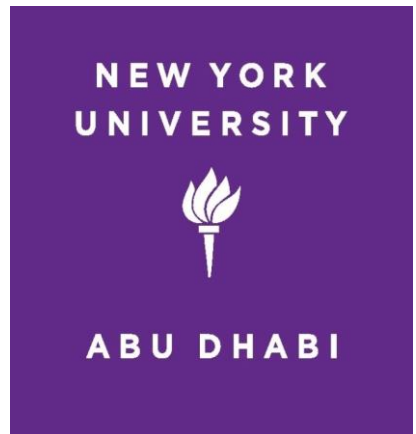


# Install R for Windows

Amar Ahmad

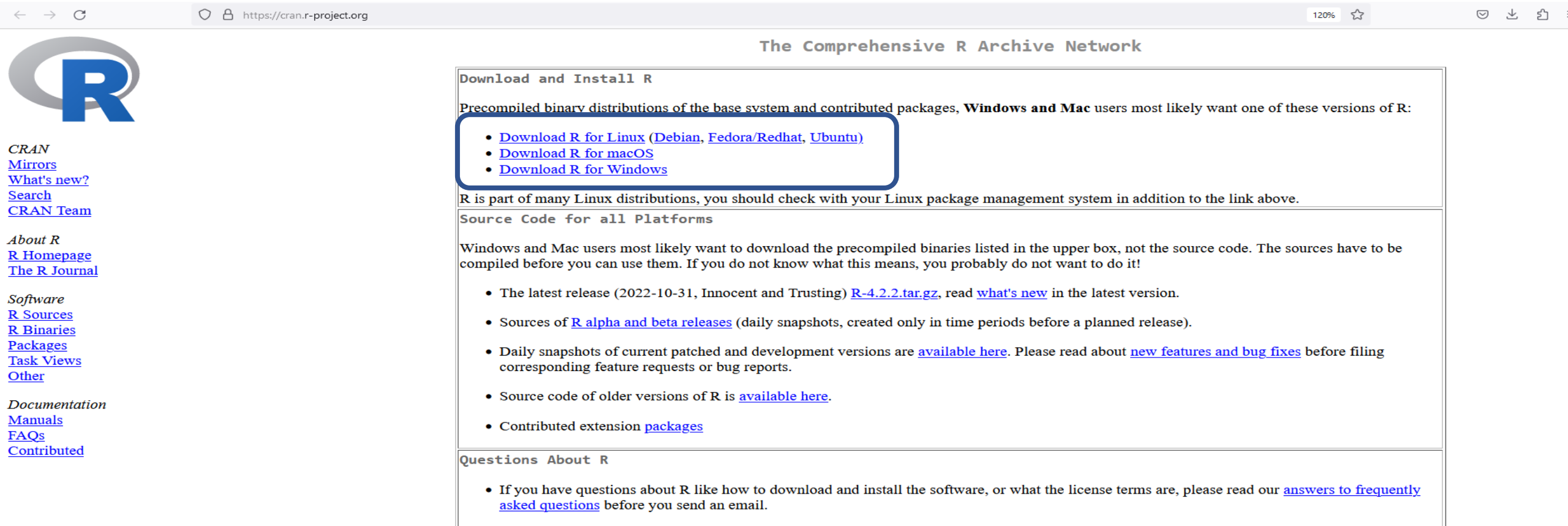
New York University in Abu Dhabi



# Download R

- To download R visit the following website  
<https://cran.r-project.org/>

# Select Your Operating System & Click Download R for



← → ↻ 🔒 https://cran.r-project.org 120% ☆ 📄

## The Comprehensive R Archive Network

### Download and Install R

Precompiled binary distributions of the base system and contributed packages, **Windows and Mac** users most likely want one of these versions of R:

- [Download R for Linux \(Debian, Fedora/Redhat, Ubuntu\)](#)
- [Download R for macOS](#)
- [Download R for Windows](#)

R is part of many Linux distributions, you should check with your Linux package management system in addition to the link above.

### Source Code for all Platforms

Windows and Mac users most likely want to download the precompiled binaries listed in the upper box, not the source code. The sources have to be compiled before you can use them. If you do not know what this means, you probably do not want to do it!

- The latest release (2022-10-31, Innocent and Trusting) [R-4.2.2.tar.gz](#), read [what's new](#) in the latest version.
- Sources of [R alpha and beta releases](#) (daily snapshots, created only in time periods before a planned release).
- Daily snapshots of current patched and development versions are [available here](#). Please read about [new features and bug fixes](#) before filing corresponding feature requests or bug reports.
- Source code of older versions of R is [available here](#).
- Contributed extension [packages](#)

### Questions About R

- If you have questions about R like how to download and install the software, or what the license terms are, please read our [answers to frequently asked questions](#) before you send an email.

## What are R and CRAN?

R is 'GNU S', a freely available language and environment for statistical computing and graphics which provides a wide variety of statistical and graphical techniques: linear and nonlinear modelling, statistical tests, time series analysis, classification, clustering, etc. Please consult the [R project homepage](#) for further information.

CRAN is a network of ftp and web servers around the world that store identical, up-to-date, versions of code and documentation for R. Please use the CRAN [mirror](#) nearest to you to minimize network load.

# Click Download R for Windows if You use Windows

## R-4.2.2 for Windows

[Download R-4.2.2 for Windows](#) (76 megabytes, 64 bit)

[README on the Windows binary distribution](#)

[New features in this version](#)

This build requires UCRT, which is part of Windows since Windows 10 and Windows Server 2016. On older systems, UCRT has to be installed manually from [here](#).

If you want to double-check that the package you have downloaded matches the package distributed by CRAN, you can compare the [md5sum](#) of the .exe to the [fingerprint](#) on the master server.

### Frequently asked questions

- [Does R run under my version of Windows?](#)
- [How do I update packages in my previous version of R?](#)


Please see the [R FAQ](#) for general information about R and the [R Windows FAQ](#) for Windows-specific information.

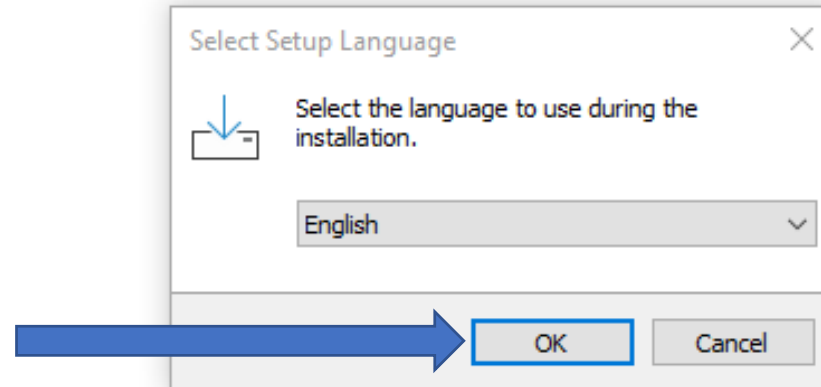
### Other builds

- Patches to this release are incorporated in the [r-patched snapshot build](#).
- A build of the development version (which will eventually become the next major release of R) is available in the [r-devel snapshot build](#).
- [Previous releases](#)

Note to webmasters: A stable link which will redirect to the current Windows binary release is <CRAN MIRROR>/bin/windows/base/release.html.

# Select Your Language You Use

<input type="checkbox"/> Name	Date modified	Type	Size
▼ Today (1)			
<input checked="" type="checkbox"/>  R-4.2.2-win	2/10/2023 4:23 PM	Application	77,674 KB



# Click Next

The image shows a Windows file explorer window with a search bar at the top containing the text "Search Downloads". Below the search bar, there is a list of files under the heading "Today (1)". One file is listed: "R-4.2.2-win" with a size of "77,674 KB".

Overlaid on the file explorer is a dialog box titled "Setup - R for Windows 4.2.2". The dialog box has a close button (X) in the top right corner. Below the title bar, there is a section labeled "Information" with a sub-header "Please read the following important information before continuing." and the R logo. Below this, it says "When you are ready to continue with Setup, click Next." and contains a scrollable text area with the following text:

GNU GENERAL PUBLIC LICENSE  
Version 2, June 1991

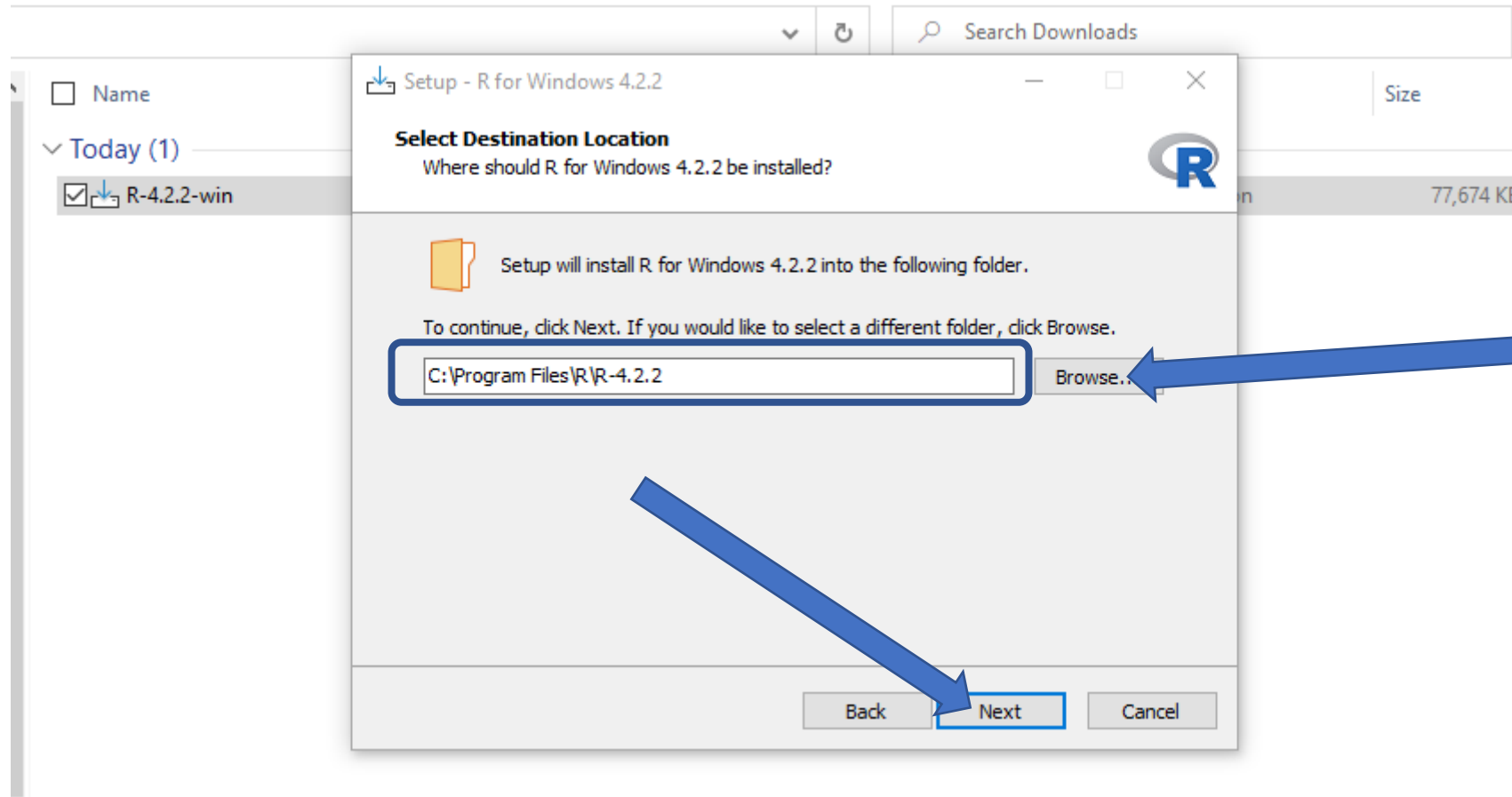
Copyright (C) 1989, 1991 Free Software Foundation, Inc.  
51 Franklin St, Fifth Floor, Boston, MA 02110-1301 USA  
Everyone is permitted to copy and distribute verbatim copies  
of this license document, but changing it is not allowed.

Preamble

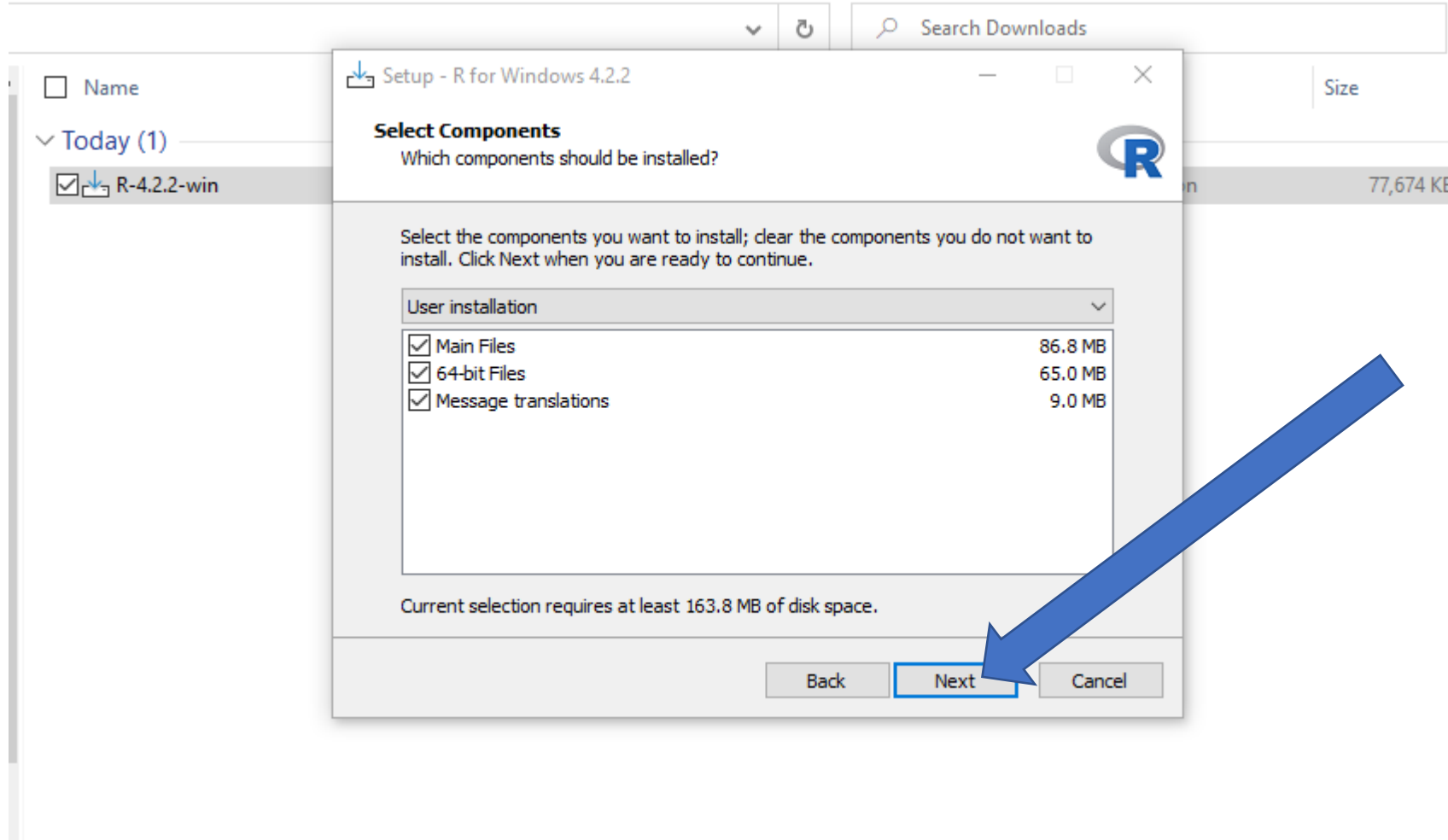
The licenses for most software are designed to take away your  
freedom to share and change it. By contrast, the GNU General Public  
License is intended to guarantee your freedom to share and change free  
software--to make sure the software is free for all its users. This  
General Public License applies to most of the Free Software  
Foundation's software, and to any other program whose authors commit to

At the bottom of the dialog box, there are two buttons: "Next" and "Cancel". A large blue arrow points from the left towards the "Next" button.

# Select where you would like R to be installed

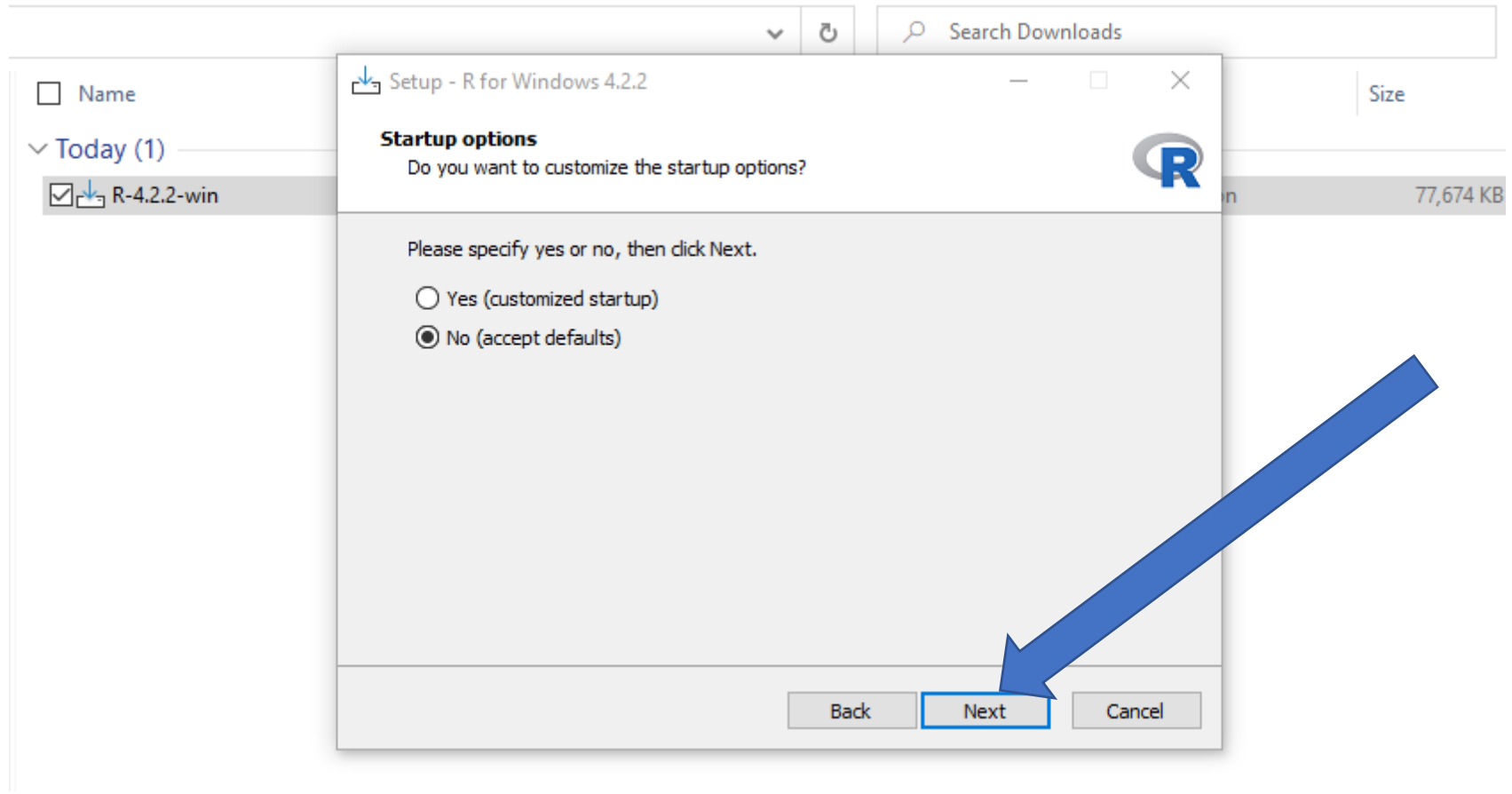


Choose the 64-bit User Installation If your computer is a 64-bit (Optional) & Then click Next.

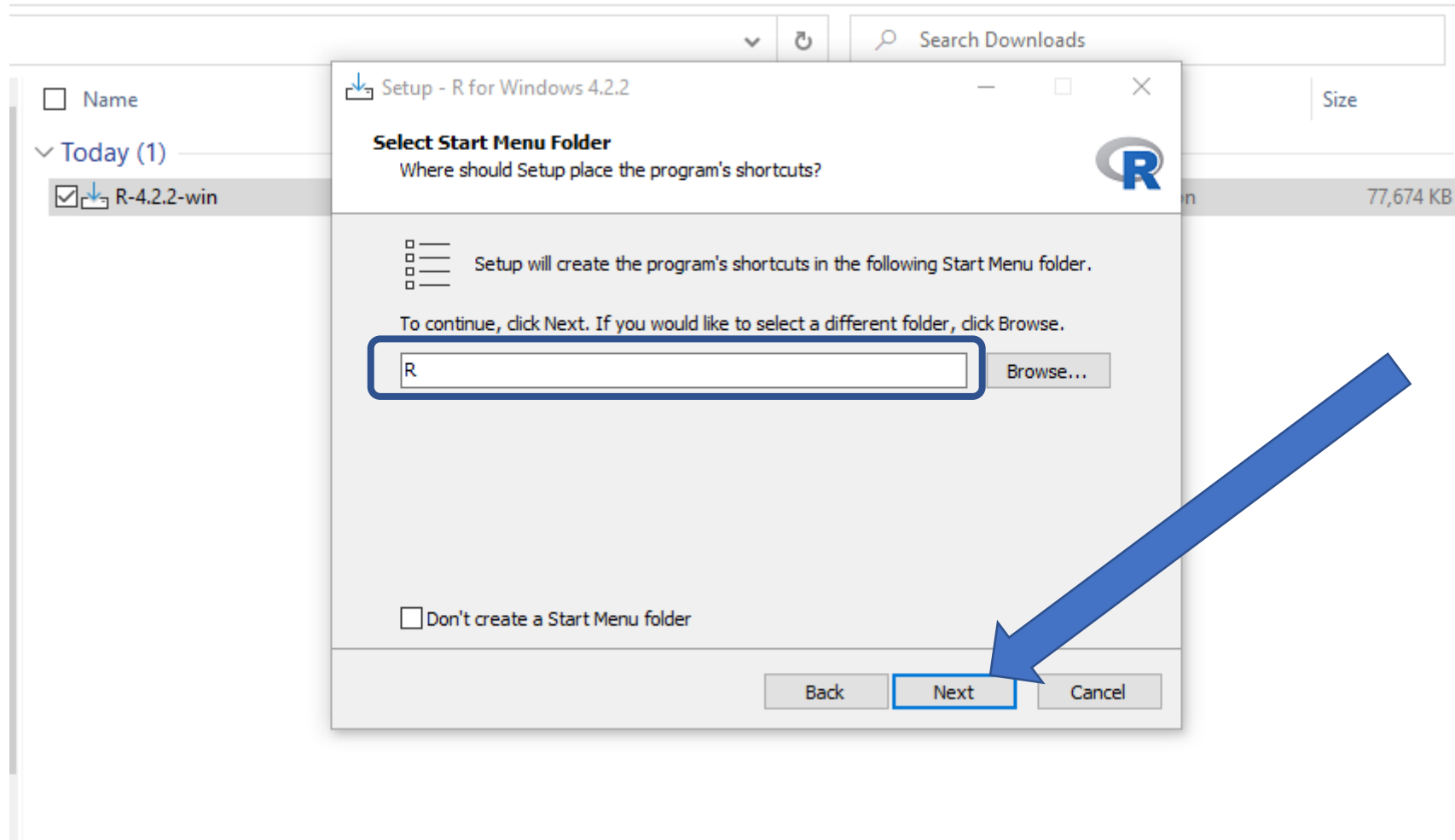




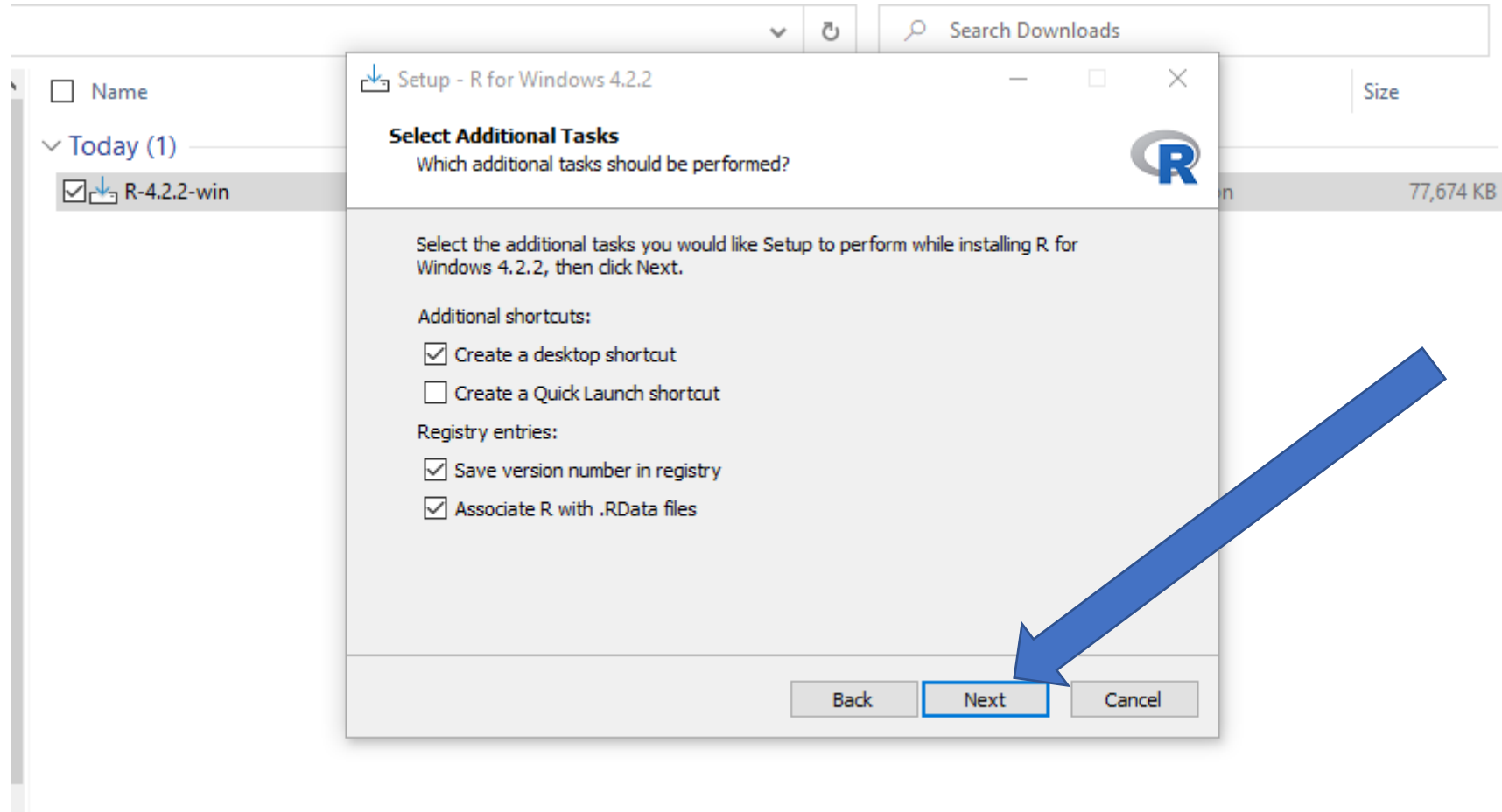
# Click Next



# Choose The folder Where You Want R to Be Saved



# Click Next



# Click Finish

